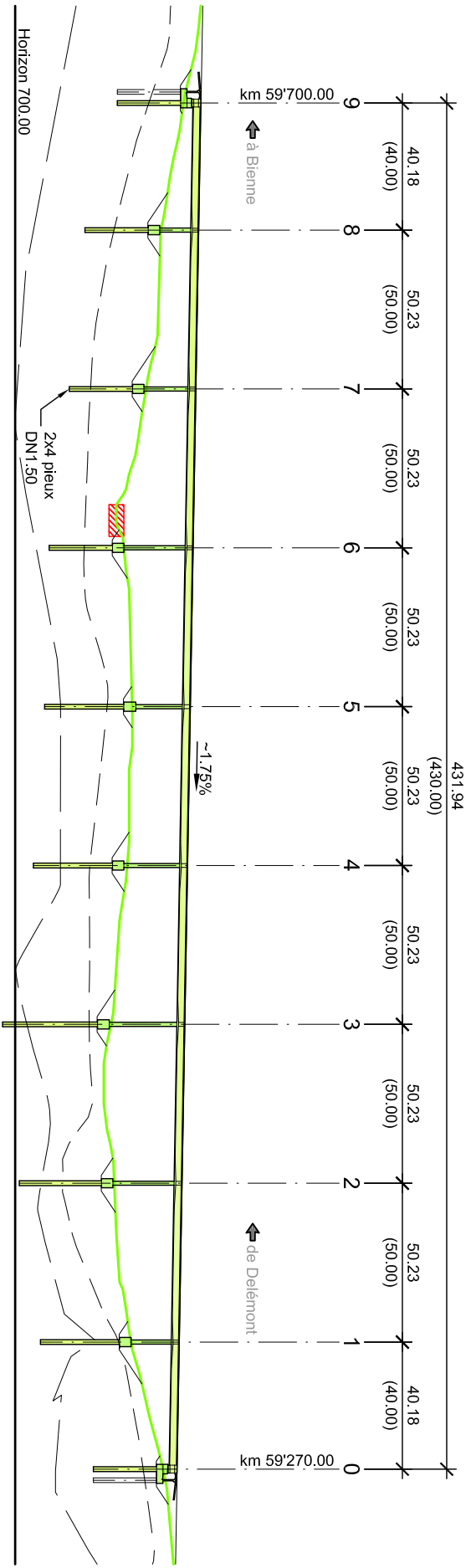
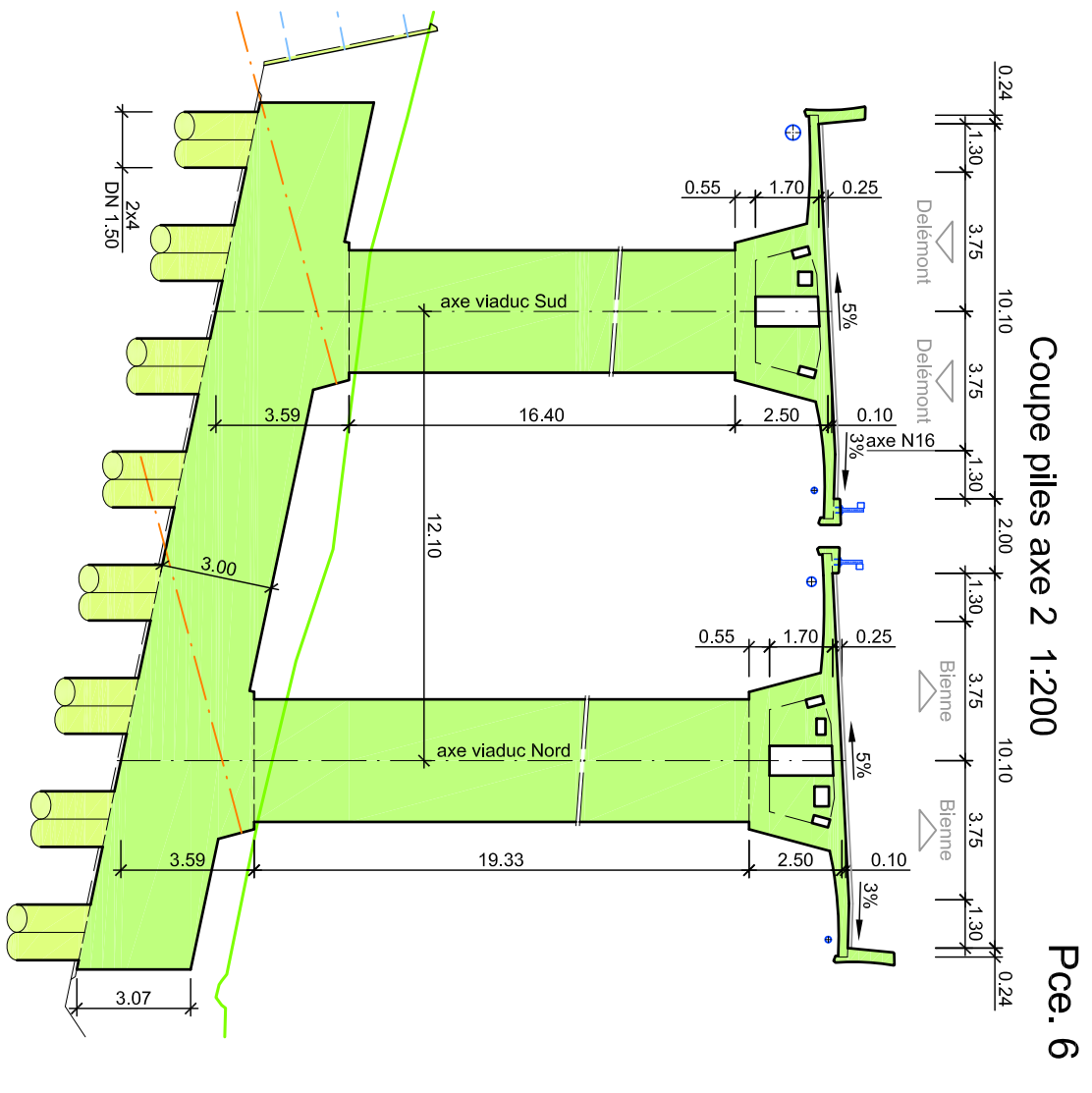
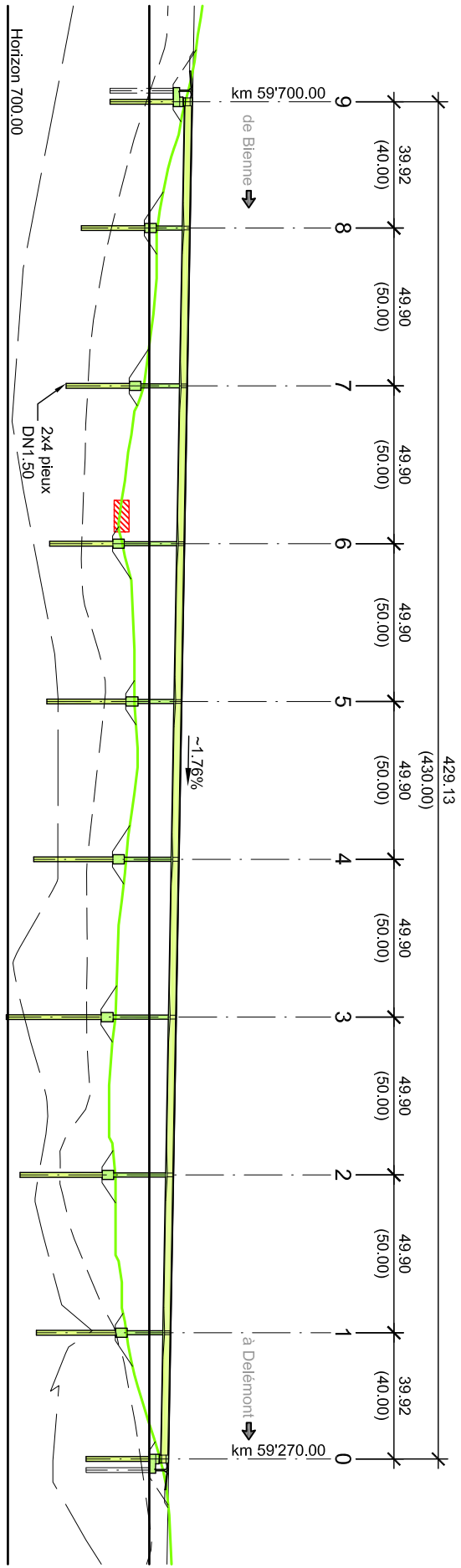


Situation 1:2'000

Coupe longitudinale axe viaduc Nord 1:2'000



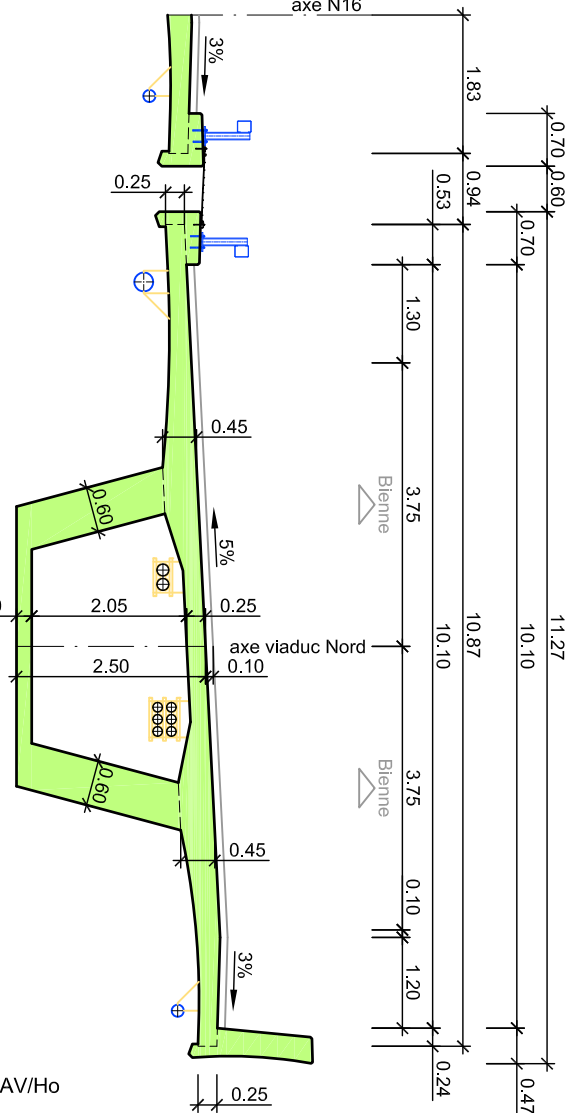
Coupe longitudinale axe viaduc Sud 1:2'000



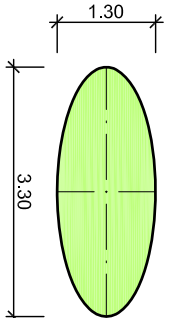
Coupe piles axe 2 1:200


Pce. 6

Coupe tablier 1:100



Section pile 1:100



No. de l'ouvrage	Nom de l'ouvrage	Axe	km	Canton	Commune	 ingénieurs civils EPF-SIA gvh tramelan sa rue de la paix 30 ch-2720 tramelan tél. 032 487 46 36 fax. 032 487 61 32 e-mail: tramelan@gvh.ch
<b>D 50</b>	<b>Viaducs de la Rosière</b>	<b>N16</b>	<b>59'485</b>	<b>BE</b>	<b>Sorvilier</b>	