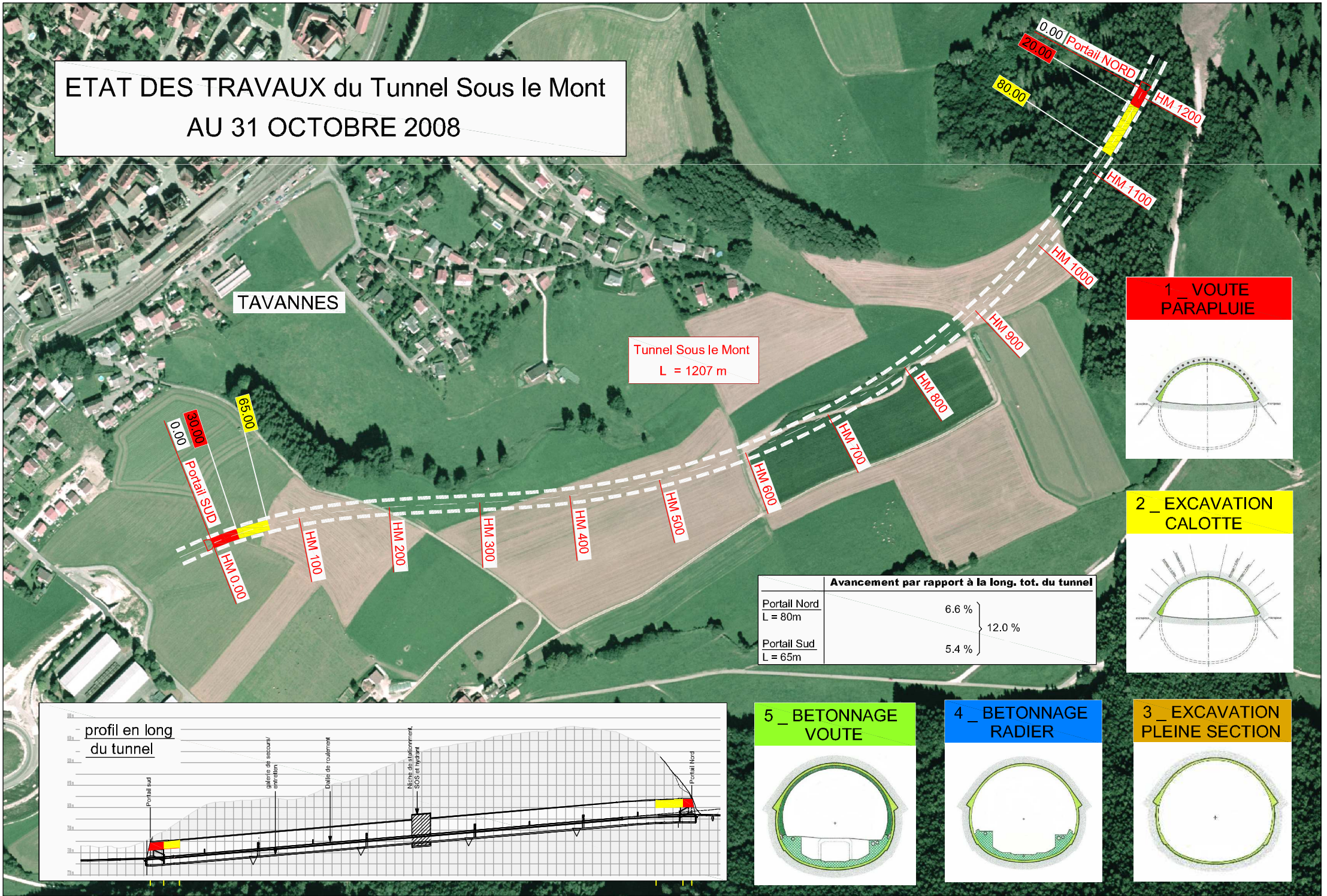
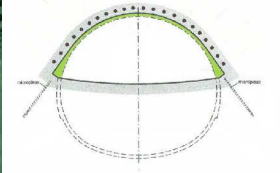


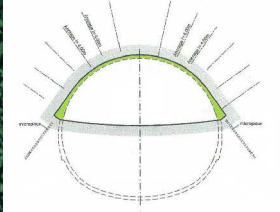
ETAT DES TRAVAUX du Tunnel Sous le Mont AU 31 OCTOBRE 2008



1 _ VOUTE PARAPLUIE

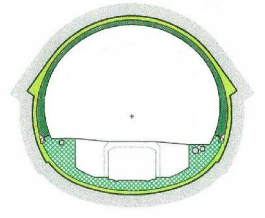


2 _ EXCAVATION CALOTTE

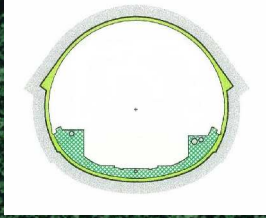


Avancement par rapport à la long. tot. du tunnel	
Portail Nord L = 80m	6.6 %
Portail Sud L = 65m	5.4 %
	12.0 %

5 _ BETONNAGE VOUTE



4 _ BETONNAGE RADIER



3 _ EXCAVATION PLEINE SECTION

